



TENANT SUITE SIGNAGE

SIGNAGE PLAQUE (ENTRY DOOR):

Plaque is 3/8" thick Verde Fountaine marble Tile with Satin finish Aluminum Frame.

Includes: Tile insert, Suite Number, Braille Tab and Installation

Floor Directory Strip (Single line):

Characters/Text:

Letters (8-15) each x **\$29.50**

Letters (16 or more) each x **\$26.00**

Punctuation each x **\$10.00**

(Note: Fees include installation of New letters on Existing plaque)

Fee (plus Tax)

\$ **185.00**

\$ **45.00**

= \$ -

= \$ -

= \$ -

Subtotal = \$ -

Tax = \$ -

Total = \$ -

(Suite Number)

(Braille)

* First Letters Only will be in Caps and rest will be Lower case.

* Fill out allotted boxes with company name.

* Use only one (1) character / per box.

* Allow one (1) box for space in between words.

* Do Not Exceed the amount boxes allotted.

* Building Standard Typestyle is "Caslon" and shall be uniform for all Tenant entry signs.

* Letters are 1/8" Aluminum with brushed face and sandblasted edges.

* Copy shall be flushed left.

* Suite Number shall be flush right, and will be assigned by Landlord pursuant to Lease.

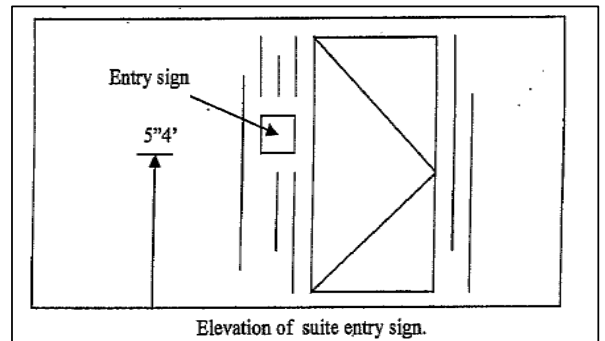
* Braille plate shall be centered under Suite Number.

Once layout proof has been approved and/or installed, any changes, additions, and/or deletions to the Tenant's Signage will incur additional billable labor and material fees.

Approved By (Name in Print): _____

Signed: _____

Date: _____



Submit this form to aliiplace@madisonmarquette.com